

sikla

Your Partner



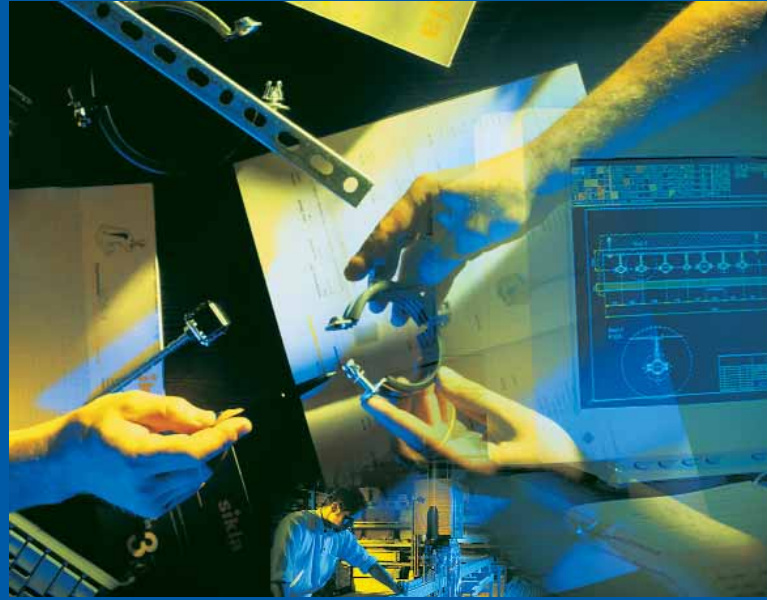
Siconnect
Simotec

Your partner for quality products and services

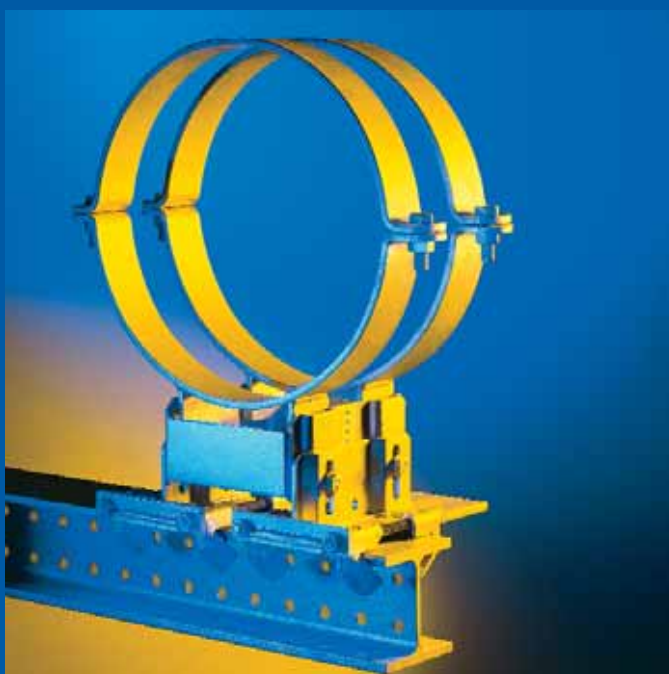
Sikla is one of the leading European manufacturers of pipe support products and fixings for the building industry.

A family company, founded in 1967 in Villingen-Schwenningen Germany, Sikla is widely recognised for the uncompromising quality of its services and products marketed today in over 30 different countries. With a comprehensive network of subsidiaries and commercial partners throughout Europe and beyond, Sikla can offer on-the-spot advice and assistance for projects at both national and international levels.

The group serves customers from all branches of the building industry, ranging from investors, systems analysts, architects, mechanical engineering and design offices through to local craftsmen, installers and distributors.



The best support for your installation needs



Innovative system products

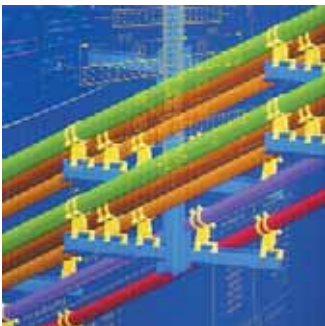
In its permanent quest for ways to improve its existing product range and develop new and innovative support concepts, Sikla regularly teams together independent experts from various mechanical and engineering fields with its own technical staff to work together during the product research and development phases. As a result, each new product benefits from optimal design, performance and quality standards guaranteed to render on-site installation easier, quicker and safer.

A complete range of services

- ◆ 2D and 3D support drawings using AutoCAD or “Simoplan 3D”
- ◆ Static load calculations for supports and Fixed Points using “Siplan” software
- ◆ Prefabrication of supports
- ◆ Product hardware and software training

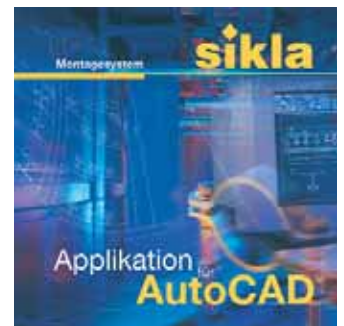


State-of-the-art software



Static load calculations with “Siplan”

This exclusive software serves for calculating the optimal channel profile and fittings for each support situation, taking into account the loads applied and the building layout. Each calculation is printed out in a report giving full statistical results, a graphic representation of the support structure and additional data such as anchor point loadings, load deflexion and bending stress curves, etc..



Graphic libraries

- ◆ AutoCAD 2D/3D
- ◆ Microstation 2D/3D
- ◆ “Simoplan 3D” pipe support design software
 - for PDS
 - for PDMS

“Made-to-measure” prefabrications



Sikla’s prefabrication department offers complete design, prefabrication and “just-in-time” delivery services for customer-specified supports and fixings. The savings in terms of design time and labour costs, coupled to the certainty of optimum and consistent build quality, are decisive factors for the increasing number of decision-makers who adopt these services today.

- ◆ Complete suspended or floor-mounted channel structures, cross-beams
- ◆ Pre-equipped supports including all pipe fixings and accessories
- ◆ In-wall and wall-suspended support fittings for sanitary applications



Siconnect

The complete system for the building and light industry

Over the last 35 years, Sikla has forged a solid reputation in the design, manufacture and marketing of modular pipe support systems. Siconnect is the name of the product range dedicated to general building and light industrial applications. Nevertheless, this range remains compatible with the Simotec heavy industrial range of pipe supports and beam structures, together ensuring a broad-market solution for the majority of pipe support requirements.



The principal Siconnect lines

Pipe Clamps and Accessories

Ducting Supports

Channels and Fixings, PRESSIX

Brackets

Slide Supports

Fixed Point Packages

Sound Absorption Products

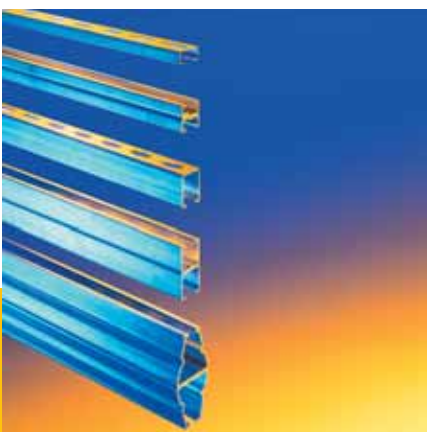
Products for Beam and Roof Panel Fixings

Anchors and Small Parts

Pipe Connectors

Sign System

Stainless Steel Products



Simotec

The new style of plant engineering

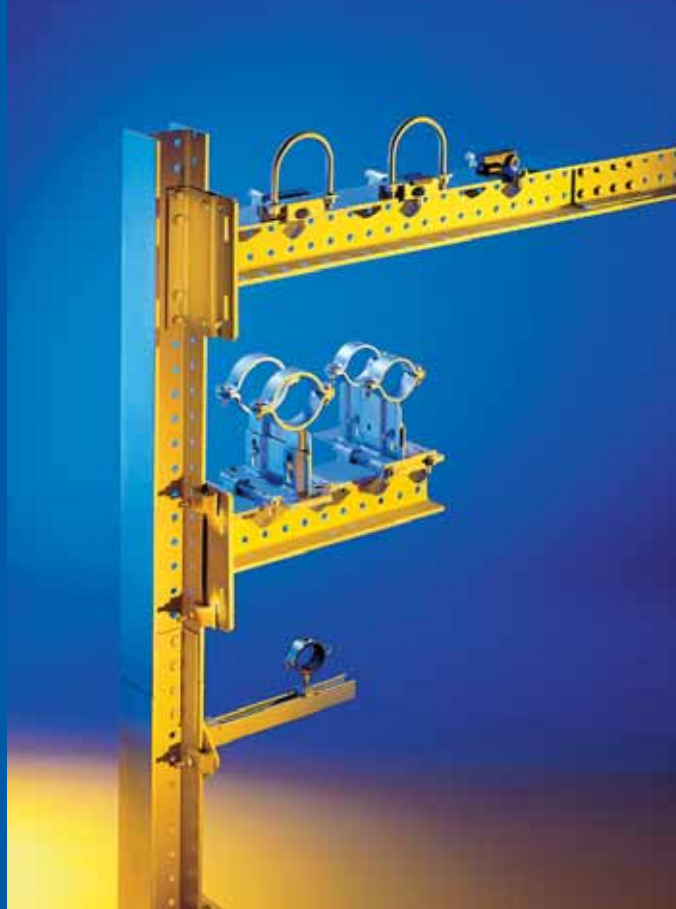
Simotec is the name of the product range developed by Sikla for industrial and heavy load pipe support applications. It represents a major technological step forward compared to traditional methods of installation based on one-off welded structures. Each Simotec construction is mounted – and dismounted – within minutes by simple bolting, compared to the hours of preparation, pre-assembly and on-site work required with welded systems. A wide choice of pipe supports (sliding, guided and Fixed Point clamps on T-profiles, U-bolts etc..) with clamp-on fixing accessories is available in the Simotec range to rapidly complete each support structure. Savings of up to 50% in design time are perfectly attainable using this system, with equivalent gains in terms of mounting and installation time on site : all partners in the project can benefit from the advantages of the system.

Advantages for the investors

- ◆ Transparency in material costs and planning schedules
- ◆ No extra or “hidden” costs to bear or budget for

Advantages for the planners

- ◆ Engineering support from Sikla
- ◆ New “state-of-the-art” CAD software tools
- ◆ Clarity and simplicity in defining technical specs, reduced risk of errors



Advantages for the installers

- ◆ Important savings in installation times
- ◆ On-site support from Sikla throughout the project
- ◆ Standard product range available ex-stock
- ◆ Full logistics services from Sikla
- ◆ Single-source contact for all support requirements



Simotec pipe supports

- ◆ Sliding supports
- ◆ Guided supports
- ◆ Fixed Points
- ◆ Height adjustable as standard
- ◆ For pipes from DN 25 to DN 600

Simotec structural elements

- ◆ Beams, cantilever brackets and modular sections in HEB 100 or HEB 120 profile
- ◆ Wide range of different styles and lengths available ex-stock
- ◆ Numerous mounting configurations thanks to a broad selection of connecting parts
- ◆ Rapid and easy assembly/adjustments/disassembly by bolts



Hot-dipped galvanised range

All Simotec products are supplied in hot-dipped galvanised finish. For lighter load supports in industrial applications, either linked to Simotec structures or as stand-alone systems, Sikla proposes a wide selection of hot-dipped galvanised products similar to those found in the standard Siconnect catalogue range.

Siconnect

Ratio S M8

- ◆ Single-piece pipe clamp with EPDM: 17 dB(A) sound reduction
- ◆ M8 thread connection
- ◆ Equipped with a time-saving quick-set clip
- ◆ For pipes of a size between 10 mm and 1 1/2"



Ratio LS 2000

- ◆ Two-piece pipe clamp with EPDM lining: 17 dB(A) sound reduction
- ◆ M8/M10 thread connection
- ◆ Equipped with a time-saving quick-set clip
- ◆ For pipes of a size between 1/4" and 4"
- ◆ Available with silicone sound absorption lining (up to 200°C)



Ratio S 2000

- ◆ Two-piece pipe clamp with EPDM: 16 dB(A) sound reduction
- ◆ Sizes 1 1/4" and greater with Sikla Multi-Thread 3G Safety nut, M8/M10/M16 thread connection
- ◆ Equipped with a time-saving quick-set clip
- ◆ For pipes of a size between 1/4" and 6"



Ratio K 2000

- ◆ For all kinds of plastic pipes (PVC, PE, etc.)
- ◆ Two-piece pipe clamp with a special rubber profile lining
- ◆ Distance rings (detachable)
- ◆ Sizes 1 1/4" and greater with Sikla Multi-Thread 3G safety Nut, M8/M10/M16 thread connection
- ◆ Equipped with a safe and time-saving quick-set clip
- ◆ For pipes of a size between 1/4" and 6"



Stabil D3G

- ◆ Two-piece heavy-duty pipe clamp with EPDM sound absorption lining: 18 dB(A)
- ◆ With welded Sikla Multi-Thread 3G safety Nut
- ◆ Also available without sound absorption lining and with silicone lining
- ◆ For pipes of a size between 3/8" - 10"



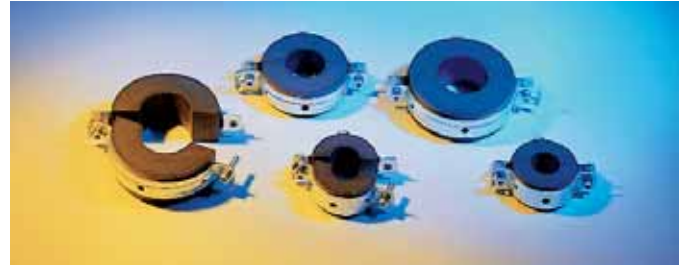
Stabil D M16

- ◆ Two-piece heavy-duty pipe clamp with EPDM sound absorption lining: 18 dB (A)
- ◆ M16 thread connection
- ◆ Also available without sound absorption lining or with silicone lining
- ◆ For pipes of a size between 324 and 521 mm



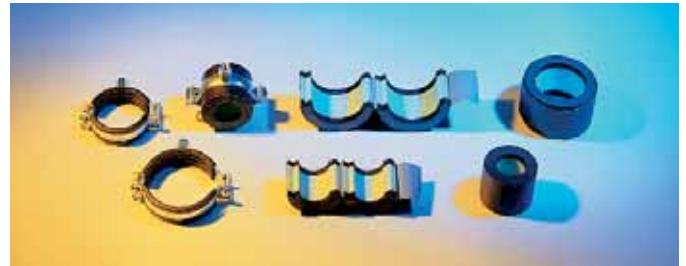
Refrigeration clamp SKS Top-2C

- ◆ Pre-assembled refrigeration clamp composed of a pipe clamp and a 250 kg/m³ PUR insulating sleeve
- ◆ Pipe clamp with Sikla Multi-Thread 3G safety Nut
- ◆ For high static loads
- ◆ For pipes of a size between 3/8" and 10"



Refrigeration clamp LKS

- ◆ Pre-assembled refrigeration clamp composed of pipe clamp and a PUR insulating sleeve with elastomer end rings
- ◆ Thread connection M8/M10 or Sikla Multi-Thread 3G Safety nut
- ◆ Thickness of insulation sleeves 13 and 19 mm
- ◆ For pipes of a size between 15 and 273 mm



Refrigeration clamp CMP

- ◆ Pipe clamp and insulating sleeve made of 80 kg/m³ PUR foam
- ◆ Prevents condensation and thermal bridges
- ◆ M8/M10 thread connection or Sikla Multi-Thread 3G safety nut
- ◆ Thickness of insulation sleeves: 25, 30 or 40 mm
- ◆ For pipes of a size between 21 and 273 mm



Duo Clamp

- ◆ Two-piece pipe clamp without sound absorption lining
- ◆ M8/M10 thread connection
- ◆ For pipes of a size between 1/2" and 10"



Pipe Loop

- ◆ For sprinkler systems (FM, Vds)
- ◆ Available as Pipe Loop N and Praktica S
- ◆ For pipes of a size between 1" and 10"



Ducting Clamp

- ◆ Two-piece ducting clamp
- ◆ M8/M10 thread connection (71-500 mm)
- ◆ Both sides of the ducting clamp may be attached to grup screws (224-1250 mm)
- ◆ Available with and without sound absorption lining/element



Siconnect - Pressix

Channels

- ◆ Range of different sizes, from 27/18 to 41/75/75, single and double channels
- ◆ Channels between 41/21 and 41/75/75: supporting edges are curved inside and toothed, with 1 cm, 5 cm and 10 cm distance marks
- ◆ Electro-galvanised steel strip, slotted
- ◆ Available lengths of 2 and 6 m



Channel accessoires / other supports

- ◆ Channel Nuts, Speed Nuts and Speed Nuts HZ with spring washer
- ◆ Holding Brackets for Sikla channels
- ◆ Adapter, Reducers, Rod Couplings
- ◆ Grub Screws in different lengths
- ◆ Screws with wood threads, link eyes, washers, etc.



Pressix 30

- ◆ Channel 27/30 galvanised, slotted with 1 cm, 5 cm and 10 cm distance marks
- ◆ Channel cutter to quickly section and cut the channels on site
- ◆ Blocks and Block Sets M8 and M10 pre-assembled and ready for immediate use – click! and the job is done!
- ◆ Support brackets of lengths between 190 mm and 795 mm for wall mounting
- ◆ Rod cutter for Pressix Grub screws (cutting and chamfering of threads is no longer required)



Pressix CC 41

- ◆ Blocks M8/M10/M12 and Blocksets M8 and M10 are pre-assembled and ready for immediate use – click! and the job is done!
- ◆ Suitable for all Sikla channels of sizes 41/21 to 41/75/75 (single and double)
- ◆ Rod cutter as used for Pressix 30



Socket Angles / Tie Rods / Universal Joints

- ◆ Socket Angles 90° and 45°
- ◆ Support brackets from 100/100 up to 880/550
- ◆ Tie Rods for Support Brackets
- ◆ Sheet steel Mounting and Webbing pieces for construction of Sikla channels
- ◆ Universal joints for Grub Screws



End Supports / Fitting Sets / Channel Connectors

- ◆ WBD end supports for setting up brackets, ceiling structures, and vertical props for framework constructions composed of Sikla channels of sizes 41/21 to 41/75/75
- ◆ Fitting Sets for setting up crossbars between two building or construction surfaces
- ◆ Channel connectors for extending Sikla channels on site
- ◆ Rod Couplings for Grub Screws and Threaded Pipes



Cantilever Brackets

- ◆ Type 27/30: length 190 to 795 mm
- ◆ Type 41/41: length 200 to 1010 mm
- ◆ Packing: with safety end cap included



Slide Sets / Slide Blocks

- ◆ Slide sets for industrial application with one or two pipe clamps, attachment to channels, concrete and steel beams, etc.
- ◆ Slide elements as single mounting components attached directly to Walls or to Sikla channels
- ◆ Slide Block S1 with an incorporated threaded insert, used preferably in combination with Sikla channels 41/41 to 41/75/75



Siconnect

Fixed Points

- ◆ Complete kits to install fixed points for pipelines
- ◆ Fixed Point clamps from 1/2" up to 521 mm
- ◆ Connection Kits for installing vertical props between clamps and building/construction
- ◆ Sikla support for load calculations



Sound Absorption Elements

- ◆ Sound-proof supports and components (for ducts, channels, etc.)
- ◆ Sound absorption elements SDE for high loads
- ◆ Channel lining



Mounting Solutions for Beams and Ceilings made of Trapezoidal Corrugated sheet

- ◆ Beam clamps for connection to steel beams, with clamping screw, with or without internal female threading. Beam clamp TCS I can be inserted into any Sikla channel from 41/21 to 41/75/75
- ◆ Beam clips for fixing Sikla Channels to beams
- ◆ SKL clamping end for fixing channels between support glanges and U-beams
- ◆ Hook sleeves for grub screws of sizes M8 to M12, threaded hooks, hook brackets
- ◆ Toggle studs (FM, Vds), Roof Hangers, Piercing Tool for attaching to ceilings made of trapezoidal corrugated sheet



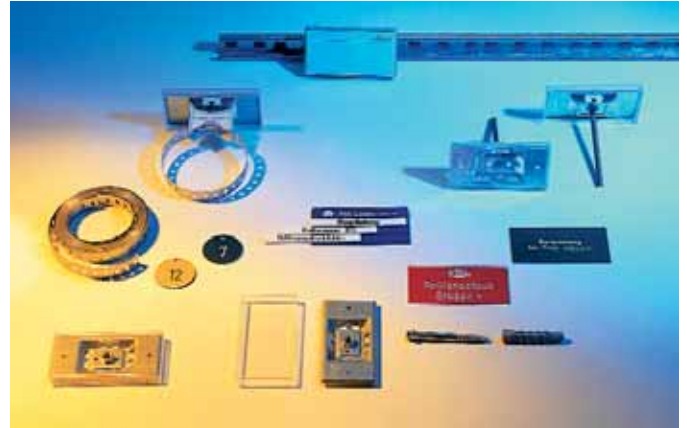
MMS bolt screw anchor, dowels

- ◆ MMS bolt screw anchor: The bolt screw that doesn't need a plug!
- ◆ Mechanical dowels and mounting equipment, e.g. drive plug, heavy-load anchor Z ...



Sign system

- ◆ Universal Holder with fixing strap, weld rod or screw option
- ◆ Identification signs or individual inserts for insertion into sign plates
- ◆ Channel lining



Pipe connectors

- ◆ For pipes type SML, SMU ...
- ◆ SHARK KR: patented connector «two-in-one» for pipes DN 50 to DN 200
- ◆ Rapid W2/W5: connector half or complete stainless steel for pipes DN 50 to DN 200
- ◆ Redox
- ◆ Nomfix



Stainless steel clamps

- ◆ Stabil D: (DN 15 – DN 200) without screws and nuts
- ◆ Stabil D 2G and Stabil D 3G: (DN 15 – DN 200) with multi-thread connection, with or without EPDM lining
- ◆ Duo clamp M8/M10 1/4" - 4", with or without EPDM lining
- ◆ U-bolt



Stainless steel Channels / Brackets / Slide sets

- ◆ Mounting channels (single and double)
- ◆ Support brackets
- ◆ Cantilever brackets 41/41: length of 200 to 445 mm
- ◆ Slide sets and Slide Block S1
- ◆ Sound absorption elements
- ◆ Beam clamps and beam clips
- ◆ Universal joints
- ◆ Screws and nuts



Sliding Supports

- ◆ LA – HV: single clamp, height adjustable, DN 25 – DN 150
- ◆ LC – HV: double clamp, height adjustable, DN 25 – DN 300
- ◆ LD – HV: dougle clamp, height adjustable, DN 350 – DN 600
- ◆ LK – HV: single clamp, height adjustable, isolated PUR, DN 25 – DN 300
- ◆ LU – H 040: polyamide support block with fixings: DN 25 – DN 300



Guided Supports

- ◆ FA – HV: single clamp, height adjustable, DN 25 – DN 150
- ◆ FC – HV: double clamp, height adjustable, DN 25 – DN 300
- ◆ FD – HV: double clamp, height adjustable, DN 350 – DN 600
- ◆ FK – HV: single clamp, height adjustable, isolated PUR, DN 25 – DN 300
- ◆ FZ – HV: double clamp, suspended position, height adjustable, DN 25 – DN 300
- ◆ FR – H 040: U-bolt and polyamide support block with fixings, DN 25 – DN 300



Fixed Points

- ◆ XA – HV: single clamp, height adjustable, DN 25 – DN 150
- ◆ XC – HV: double clamp, height adjustable, DN 25 – DN 300
- ◆ XD – HV: double clamp, height adjustable, DN 350 – DN 600
- ◆ XR – H 040: U-bolt and polyamide support block with fixings: DN 25 – DN 300



Beams STF 100 and STF 120

- ◆ Beams STF (lengths 350 to 4000 mm)
- ◆ Beam brackets/ Joining Beam Brackets
- ◆ Angled Beam Brackets/ Beam Angles
Assembly Accessoires Simotec
- ◆ Beam connector TKU
- ◆ Bracket Plate FV
- ◆ End Support STA
- ◆ Mounting Plate GPL
Assembly Accessoires for channels
- ◆ End Support WBD C
- ◆ Assembly Set P



Hot-dipped galvanised range

Pipe clamps and accessories hdg

- ◆ Pipe clamps (heavy-load) as per DIN 3567 A
- ◆ U-bolt
- ◆ Beam Clamp TCS 1
- ◆ Beam Clip P
- ◆ Grub Screws, Screws and Nuts



Channels & Brackets hdg

- ◆ Channels (single and double)
- ◆ Holding Brackets
- ◆ Channel Nuts
- ◆ Support Brackets
- ◆ Cantilever Brackets
- ◆ Fixing Brackets



Whether for new buildings or rehabilitation projects, in-wall or wall-suspended sanitary elements offer considerable savings in design, mounting and installation time. By specifying the use of these supports, designers and investors assure minimum project disruptions, uniform quality and optimum returns on investment.

- ◆ Ideal for in-wall or suspended sanitary installations
- ◆ Easy and quick to install
- ◆ Wide range of sanitary element structures (WC, wash-basins etc.)



Sicombi

In-wall or wall-suspended sanitary elements



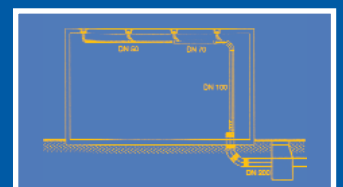
SiAqua

Siphonic rain water drainage system



Based on evolved material and software design technology, the SiAqua siphonic rain water drainage system offers significant technical and economic advantages for large roof area drainage installations in the commercial and industrial building sectors:

- ◆ Significant reductions in materials and installation costs due to the requirement for fewer roof outlets and fewer and smaller diameter pipe-work. By precise calculation of the pipe dimensions, this technique permits the drainage of an up to 5000 m² roof area using just one vertical rain-water pipe linked to a single below-ground drainage pipe
- ◆ Cost savings and reduced installation times for primary and secondary building structure work, terrain excavation and pipe-laying
- ◆ Reduced piping maintenance after installation due to the self-cleaning action of the evacuated drain water under hydraulic pressure
- ◆ Less space taken up by piping inside the building, allowing greater flexibility in design and maximum utilisation of free space. Most piping can be installed close to the inner roof level.



Siphonic rain water drainage system

How could we assist you?

Thanks for sending me more information on:

- Siconnect
- Simotec
- SiAqua
- Sicombi

The software for:

- Static calculations
- CAD drawings

Please contact me personally regarding the following topics:

Company

Name

Cip Code/Town

Address

Phone

Fax

Bitte Absender nicht vergessen

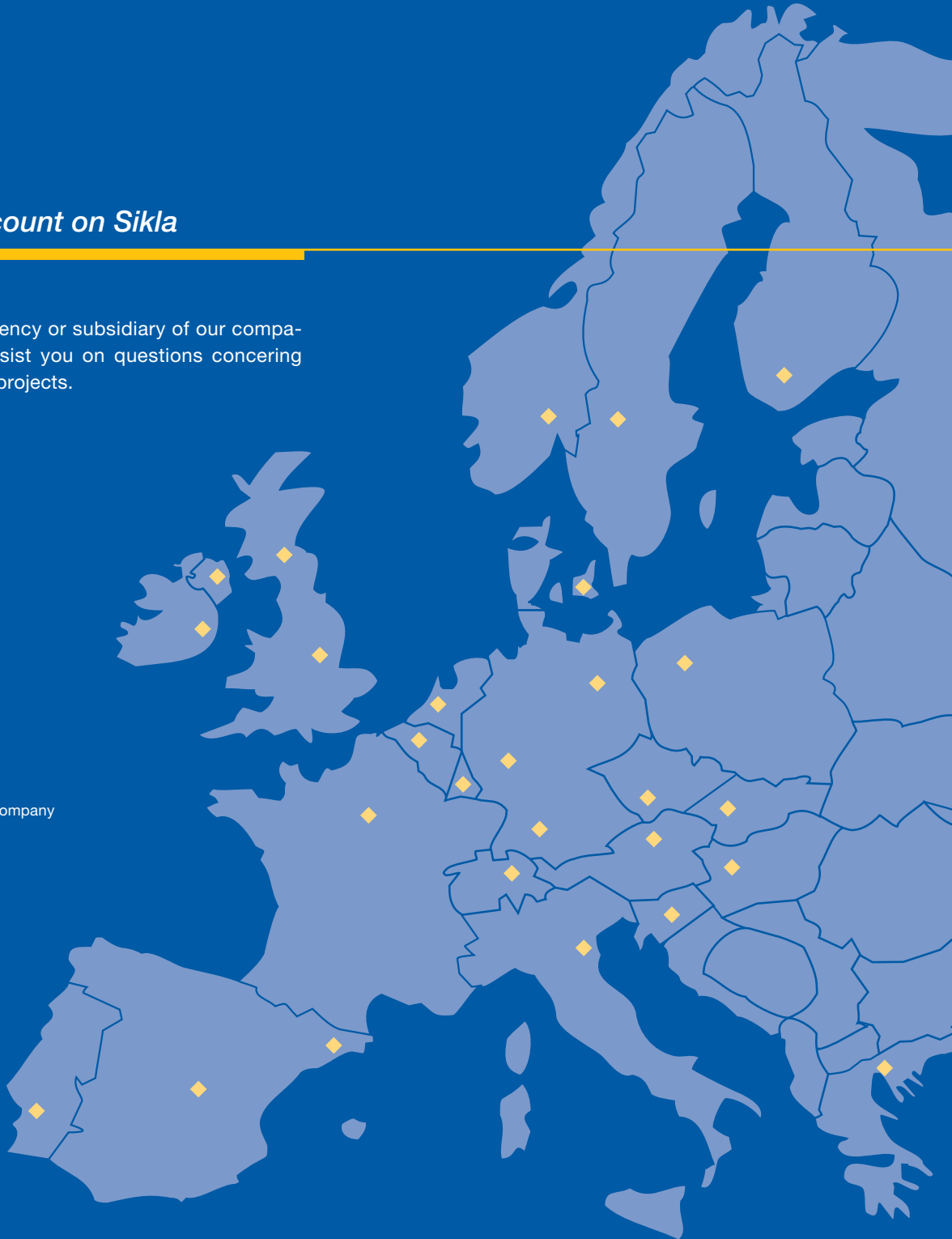
Fax form

You may always count on Sikla

Wherever you are, an agency or subsidiary of our company, will be pleased to assist you on questions concerning national and international projects.



Sikla is a DIN ISO 9001 certified company



For all questions concerning our products and our services, please contact our local partner at the address indicated below or contact us directly:

SIKLA GmbH
Export & Overseas Department
In der Lache 17
78056 Villingen-Schwenningen
Germany
Tel.:+ (49) 7720 948 453
Fax:+ (49) 7720 948 353
e-mail: export@sikla.de
www.sikla.com

Our partner in your region:

